

PERKINS

OUR PEOPLE DELIVER MORE®

Corporate Headquarters
Distribution Center
Equipment & Supply Showroom

630 John Hancock Road • Taunton, MA 02780 800.733.5708
508.824.2800 • 508.821.2670 (FAX)

Distribution Center
206 Wembley Road • New Windsor, NY 12553

Equipment & Supply Showroom
7 Perimeter Road • Manchester, NH 03103 603.669.3400

www.perkins1.com

Your source for all your Foodservice Equipment and Supplies

The safer, less expensive alternative to jellied chafing fuels.



Easy Heat Chafing Fuel



An adjustable heat chafing fuel product for all chafing applications: Chafing dishes, urns, room service carts and coffee service. You control the flame size—standard, high or low. Can does not get hot, making it safer for your employees to handle and...no shipping, storage or insurance worries because this is a non-flammable fuel in a sealed container.

Model	Description	Cs.	Pk.	Price/Ea.
EZ 2-1-3	2, 1 or 3 Hours of Heat, 3.6 oz.	48		\$61.70/Cs
EZ 6-3-8	6, 3 or 8 Hours of Heat, 9.5 oz.	24		\$36.30/Cs

Large capacity steamer offers a cost effective and convenient alternative to a "traditional" steamer.

Panasonic

Sonic Steamer



No water line, no drain line or vent hood to worry about. Holds two full-size 4" steam table pans with covers. Connectionless steamer features include 4 heating elements, 8 programmable memory pads with 16 memory capability, programmable or dial timer, 5 power levels, 3-stage cooking and removable center shelf. See-through oven door is drop down counter style.

Model	Description	Price/Ea.
NE-3280	3200 Watts, Full 3 Yr Warranty	\$3,848.00
NE-2180	2100 Watts, Limited 3 Yr Warranty	\$2,898.00

Oversized refrigeration system provides colder product temperatures, lower utility costs, exceptional food safety and the best value in today's foodservice

True.

Sandwich/Salad Prep Tables



Environmentally friendly air refrigeration system with airflow directed at pans for colder temperatures. Exterior built with stainless steel front, top, sides. Interior features white aluminum sides, top, covered corners and stainless steel floor. NSF 7 approved. Full length, extra wide removable polyethylene cutting board. 4"D clear polycarbonate insert pans included. Pan opening accommodates all standard sizes. 30-1/8"Dx36-3/4"H.

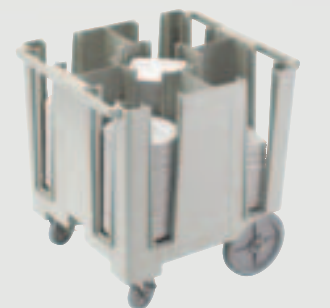
Model	Description	Price/Ea.
TSSU-72-12	72.375"L, 3 Door, 6 Shlvs	\$2,940.00
TSSU-48-10	48.375"L, 2 Door, 4 Shlvs	\$2,323.00
TSSU-60-16	60.375"L, 2 Door, 4 Shlvs	\$2,560.00
TSSU-48-12	48.375"L, 2 Door, 4 Shlvs	\$2,403.00

* Additional models available.

Store and transport valuable dinnerware with confidence by using Cambro's Dish Caddies.

CAMBRO
MANUFACTURING COMPANY

Dish Caddies



Open access for easy loading and unloading. Molded-in handles on both ends. Polyethylene construction will not rust, crack or chip. Adjustable Dish Caddy can be adjusted to hold 45-60 plates per stack—from a small 4-5/8" plate to a 13" charger plate or pasta dish. Vinyl cover included. NSF. **New Versa Dish Caddy holds both square and round plates!**

Model	Description	Price/Ea.
DCS1125	Versa-Holds 45-60 11-1/4" Rnd or 9-1/2" Sq	\$536.00
DC1225	Holds 45-60 12-1/4" Plates	\$545.00
DC825	Holds 45-60 8-1/4" Plates	\$509.00
ADCS	Adj.-Holds 45-60 4-5/8"-13" Plates	\$635.00

* Additional models available.

Produces up to 652 lbs. of ice per day.



Ice-O-Matic
Ice. Pure and Simple.

Cube Ice Makers Top Air Discharge - ICE Series

Corrosion-resistant stainless steel construction. PURE ICE—Built-in anti-microbial protection for the life of the machine inhibits bacteria and slime fungus growth. Harvest Assist—increases ice production while reducing energy consumption. Top Air Discharge—means there are no side clearance requirements and the machine can be installed in small spaces. ICE0400 shown on B55 Bin. *Bins sold separately.*

Model	Description	Price/Ea.
ICE0606 Top Air	652 lbs., 70° Air / 50° Water	\$2,635.00
ICE0500 Top Air	586 lbs., 70° Air / 50° Water	\$2,286.00
ICE0400 Top Air	499 lbs., 70° Air / 50° Water	\$2,165.00
ICE0250 Top Air	352 lbs., 70° Air / 50° Water	\$1,916.00

* Additional models available.

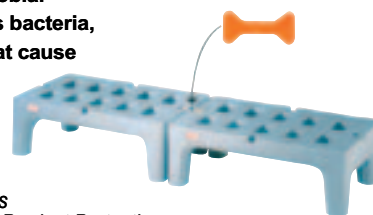
Built-in Microban antimicrobial product protection inhibits bacteria, mold, mildew and fungi that cause odors, stains and product degradation!

METRO

We put space to work™

BowTie™ Dunnage Racks

w/Microban Antimicrobial Product Protection



Racks join together without tools in "end-to-end" and "back-to-back" configurations with the exclusive BowTie™ feature. Racks have front-to-back slots for easier loading and unloading and superior air flow which promotes longer shelf life. Rust and corrosion proof. 30" and 36"—1500 lb. cap. 48" and 60"—3000 lb. cap. NSF.

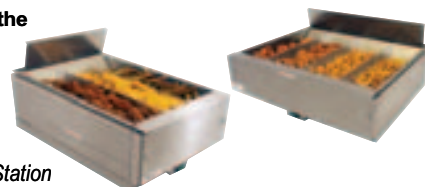
Model	Description	Price/Ea.
HP2248PD	22" x 48"	\$137.00
HP2236PD	22" x 36"	\$119.00

* Additional models available.

Reduce waste, improve profits by extending the life of your foods!

Merco

Fried Food Holding Station



Solid stainless steel construction for exceptional durability, aesthetics and cleanability. Constant circulation of hot air over and through the food controls moisture, maintains crispness and extends product retention up to 3 times! Longer hold times result in less waste, which equals increased profits for operators. Fry tray, grease tray and product dividers are all easily removed—making the FFHS a snap to clean.

Model	Description	Price/Ea.
27012/FFHS-16	13"Hx15.8"Wx24.6"D, 120V, 15.7 Amps	\$1,269.00
27002/FFHS-27	13"Hx27"Wx24.6"D, 240V, 22.9 Amps	\$1,681.00

Patented Cut-N-Carry food safety hook provides sanitary transport and storage.

SAN JAMAR

Smart • Safe • Sanitary

Saf-T-Grip Cutting Boards



Prevent slips and cross-contamination. Integrated anti-slip grips hold the board in place. Features ruler for easy portioning and cost savings. Unique co-polymer material withstands continual high temperature commercial washing and will not warp. Specify color when ordering: red, yellow, green, beige, blue or white. Sets include (1 ea.) red, yellow, green, blue, beige and white board. NSF.

Model	Description	Price/Ea.
CBG1824KC	18"x24"x1/2", 6 Board Set	\$177.00
CBG1218KC	12"x18"x1/2", 6 Board Set	\$97.50

* Additional models available.

Perfect for those chefs at healthcare facilities, hotels and other high-volume establishments who make batches of the same item several times a day.

Vita-Mix

FOODSERVICE

XL Blender System



With an impressive 1-1/2 gallon real blending capacity and 4.2 HP motor, you will increase your efficiency by serving up to 24 (8 oz.) portions in only one blending cycle. Available in two models, programmable or variable speed. The Tritan™ copolyester container, with removable lid plug, is ergonomically designed for ease of use and safety. 64 oz./ 2L container with lid, lid plug and tamper. UL. NSF.

Model	Description	Price/Ea.
5201	XL Variable Speed Blender	\$1,763.00

The Bosa Nova™ Collection boasts classic European style.

WALCO

Bosa Nova™ Flatware Collection by Walco



A unique collection that glows with the beauty of silver but is made in maintenance free 18% chrome.

Model	Description	Cs.	Pk.	Price/Ea.
1845	Dinner Knife	12		\$27.00/Dz
1812	Bouillon Spoon	12		\$10.30/Dz
1805	Dinner Fork	12		\$14.20/Dz
1801	Teaspoon	12		\$10.30/Dz

* Additional models available.



Prices are FOB Factory. Additional shipping charges may apply. Please check with our Customer Service Department as some items may need to be special or factory ordered. Allow 2 weeks for delivery. In some instances cases may not be broken or broken case charges may apply. Sales prices not valid with any other offers. Not responsible for typographical errors. Prices effective June 15 - July 31, 2009. ©2009 SEFA, Inc.

Now accommodates 6" deep pans and meets NSF 7 requirements!



TRUSTED.
Compact Prep Tables



Available in 27", 48" and 60" wide models. These tough compact prep tables really perform. Heavy duty, durable construction assures a long usable life. Refrigeration system design and engineered air flow patterns assure food product temperatures will be maintained between 33°F to 41°F, even during heavy use periods with the top left open. Front breathing design allows for zero clearance installation.

Model	Description	Price/Ea.
UPT279-R	27", 9-Pan Cap.	\$2,244.00
UPT6024-LR	60", 24-Pan Cap.	\$3,931.00
UPT4812-LR	48", 12-Pan Cap.	\$3,234.00
UPT279-L	27", 9-Pan Cap.	\$2,244.00

* Additional models available.

Delivers high volume slicing and dicing in smooth, simple, one-stroke action.



Redco Lettuce King



Bruising, waste and food damage are dramatically reduced; another "green" benefit is it costs 80% less than electric slicers! Multiple blade options for greater versatility of use. And for a more advanced prep partner, choose the Redco Lettuce King IV—the accompanying durable drum ring eliminates extra handling by snugly fitting over Rubbermaid Greenskeeper storage drums for quick cutting directly into the produce keeper. NSF.

Model	Description	Price/Ea.
401N	Lettuce King I, 3/4" Cut (10 blades)	\$412.00
402NC	Lettuce King I, 3/8" Cut (19 blades)	\$412.00
400N	Lettuce King I, 3/16" Cut (37 blades)	\$412.00
4400N	Lettuce King IV, 1" Cut	\$490.00

* Additional models available.

Ice Totes featuring NEW HACCP Hanger!



Saf-T-Ice Tote w/New HACCP Hanger & Saf-T-Scoop™/Guardian System™



The new HACCP Hanger allows users to hang the Saf-T-Ice Tote off any ice bin! Raising the tote off the ground keeps the bottom surface clean and eases back strain by bringing the tote up to waist level while filling—all at no additional cost! The HACCP Hanger is available with the Saf-T-Ice Tote and the dishwasher-sized SHORTY Ice Tote. Three sizes of Saf-T-Ice Scoop & Guardian Systems available—6-10 oz., 12-16 oz. and 64-86 oz. Dishwasher safe. NSF.

Model	Description	Price/Ea.
SI6100	Shorty Saf-T-Ice Tote, 5 Gal.	\$29.30

* Additional models available.

The FIRST Configurable Boilerless Steamer!



StratoSteam Boilerless Steamer



With a patented convection steam distribution system, the StratoSteam can begin producing steam in less than 5 minutes from a cold start-up. Stainless steel interior, front and sides. The quick pre-heat, speeds cooking times, allowing for more product to be cooked. Water resistant controls. Units are stackable for maximum cooking capacity in a small footprint. One year warranty.

Model	Description	Price/Ea.
STRG-5D	Gas 5-Pan	\$6,706.00
STRG-3D	Gas 3-Pan	\$5,418.00
STRE-5	Electric 5-Pan	\$5,943.00
STRE-3	Electric 3-Pan	\$4,364.00

* Additional models available.

Designed for high volume use and are certain to accommodate any type of kitchen with efficiency and use.

Panasonic Pro I Microwaves



These Panasonic Pro I commercial microwave ovens are equipped with top and bottom energy feed, a "grab & go" door handle and 60 programmable pads. Using the 2100 watts (NE-2157 *208/230V-240V Single), 1700 watts (NE-1757 *208/230V-240V Single) and 1200 watts (NE-1257/NE-1258 *120V Single) of power, these models are the definition of the word "durable".

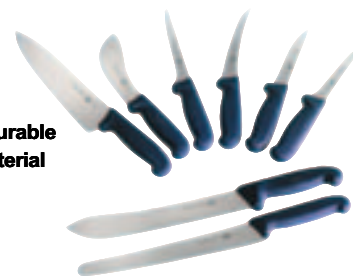
Model	Description	Price/Ea.
NE-1257R	1200 Watts	\$832.00
NE-2157R	2100 Watts	\$1,126.00
NE-1757R	1700 Watts	\$1,006.00
NE-1258R	1200 Watts	\$886.00

* Additional models available.

Microban is a safe, durable and effective antibacterial protection.



Victorinox Microban Handle Cutlery



Upon contact with bacteria, Microban penetrates the bacteria's cell wall and destroys its ability to function, grow and reproduce. Victorinox knives with Microban in the handle are an important adjunct to good sanitation practices.

Model	Description	Price/Ea.
46513	Boning Narrow Flexible 6"	\$14.00
46600	Paring 3-1/4"	\$4.20
46549	Bread Serrated 8"	\$17.60
46521	Chefs/Slicer 10"	\$26.20

* Additional models available.

Energy Star approved—Uses less energy than three 100 watt light bulbs.



H-Series Ultra Pan Carrier & Camcart



An economical alternative to large warming cabinets. Enables HACCP compliance by maintaining safe, hot food temperatures. Gentle, 150°F to 165°F heat will not cook food and maintains food moisture. Thick foam insulation retains temperatures for hours, even when unplugged. UPCH400 models stack for storage or transporting. Heated door kits also sold separately to retrofit UPC400 and UPC800. Removable cord stows securely for transport. Can be used with Cambro HP Hot Pans.

Model	Description	Price/Ea.
UPCH800	Htd. 2-Comp. Camcart	\$1,362.00
UPCH400	Htd. 1-Comp. Pan Carrier	\$602.00

* Additional models available.

These precision crafted mixers offer smooth, flawless operation and powerful mixing performance.



FMS Planetary Mixers



Capacities range from 10 to 60 quarts, giving you flexibility to achieve results in your bakery, large independent restaurant, school kitchen, nursing home or other foodservice operation. Model FMS20 shown.

Model	Description	Price/Ea.
FMS60	60 qt.	\$8,629.00
FMS40	40 qt.	\$5,488.00
FMS30	30 qt.	\$3,956.00
FMS20	20 qt.	\$2,369.00

* Additional models available.

The professional chef's power tool.



Vita-Prep 3



The Vita-Prep 3, with a 64 oz. clear, high-impact container and wet blade, has the power to blend extra-thick ingredients quickly and smoothly. The variable speed control allows you to chop, grind, knead, puree, or blend different ingredients at exactly the right speed. Large cooling fan resists overheating. Efficient muffler for quieter operation. Includes a 54-page recipe book. 20"Hx8"Wx9"D. 120 VAC, 50/60 Hz, 12-1/2 Amps. UL, NSF.

Model	Description	Price/Ea.
1005	64 oz. Polycarbonate Container	\$564.00

Finally, a boilerless convection steamer that cooks fast, stays clean and is easy to maintain.



SteamChef™ Boilerless Steamers



Patented KleanShield™ cooking compartment eliminates foaming, contamination of water reservoir and flavor transfer. High speed convection steam for fast cooking. Easy to operate SureCook timer automatically compensates for the volume of food being cooked. Easy to clean—simple vinegar cleanup. New design saves water and energy. Ideal for heavy batch cooking and medium volume a la carte style cooking. Energy Star rated energy-saving performance.

Model	Description	Price/Ea.
22CGT6	Gas, (6) Pan Cap., 62,000 BTU	\$8,074.00
22CGT3	Gas, (3) Pan Cap., 45,000 BTU	\$6,188.00
22CET6.1	Electric, (6) Pan Cap., 13.5kW	\$6,792.00
22CET3.1	Electric, (3) Pan Cap., 9kW	\$5,130.00

* Additional models available.

Patented blade can crush a half gallon of cubed ice in 3 seconds!



FOODSERVICE
Drink Machine Advance & BarBoss® Advance



The Drink Machine Advance and BarBoss Advance are engineered for quality blending. Each blender comes with a 32 oz. XP container. Available with six blender programs optimized for noise reduction and performance. Customizable with a programming chip to ensure consistent drinks (software needed). Pulse control quickly refreshes drinks. Stainless steel enclosed blade assembly with two sets of sealed ball bearings. Three year warranty. 18"Hx8"Wx9"D. 120V, 50/60 Hz, 11-1/2 Amps. UL, NSF.

Model	Description	Price/Ea.
5062	Drink Machine Advance, 32 oz. XP Container	\$495.00

Energy Star rated, self-contained top mounted refrigeration system.



V-Series Refrigerators & Freezers



Features stainless steel fronts and doors with a polished aluminum interior. Self-closing doors with 110 degree hold-open feature for easy loading. Other standard features include exterior dial thermometers, interior lights, cylinder locks, swivel casters and a 1-year parts & labor warranty. Three wire shelves are provided for each cabinet section. VS Series features ALL stainless steel exterior and interior.

Model	Description	Price/Ea.
VF-2	Freezer, 2 Door	\$3,723.00
VF-1	Freezer, 1 Door	\$2,720.00
VR-2	Refrigerator, 2 Door	\$2,797.00
VR-1	Refrigerator, 1 Door	\$2,202.00

* Additional models available.